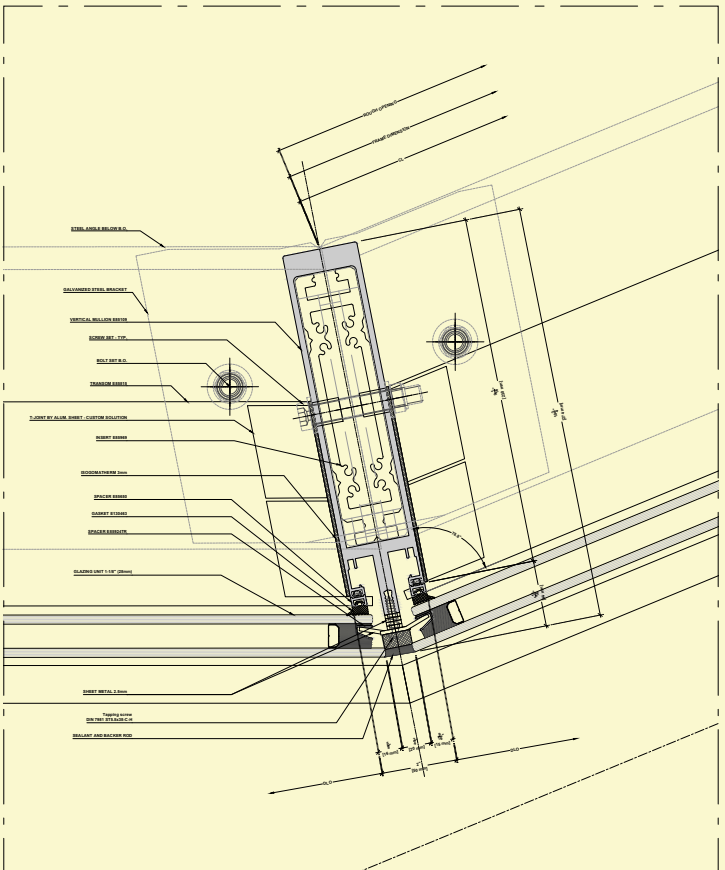
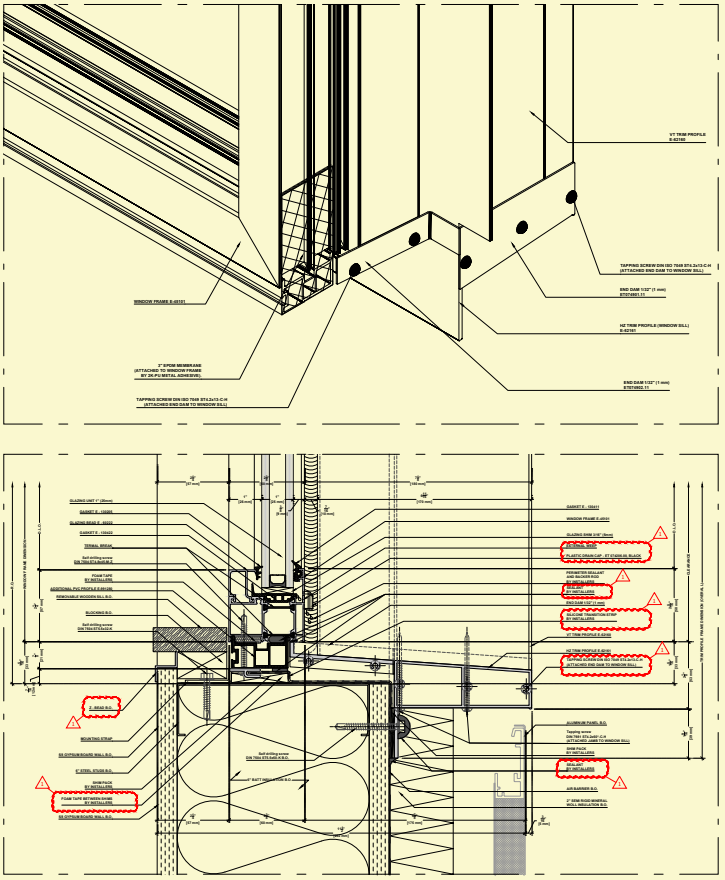
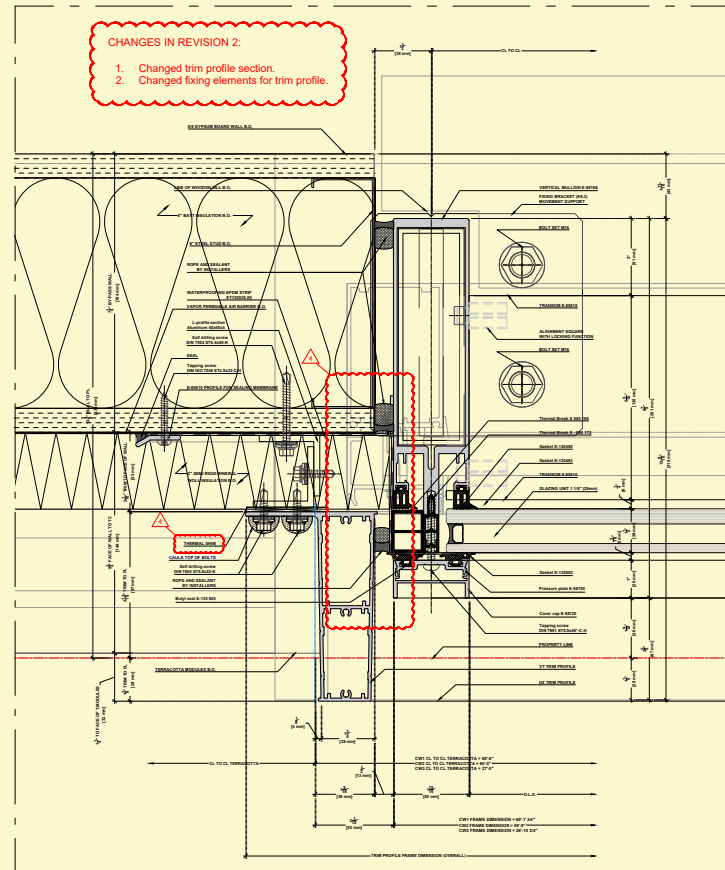
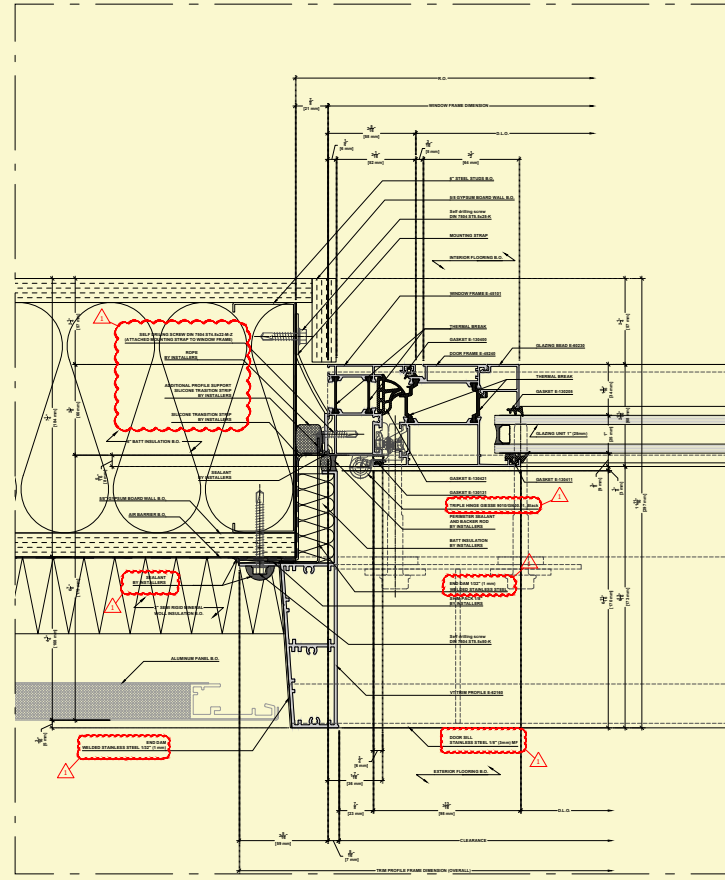
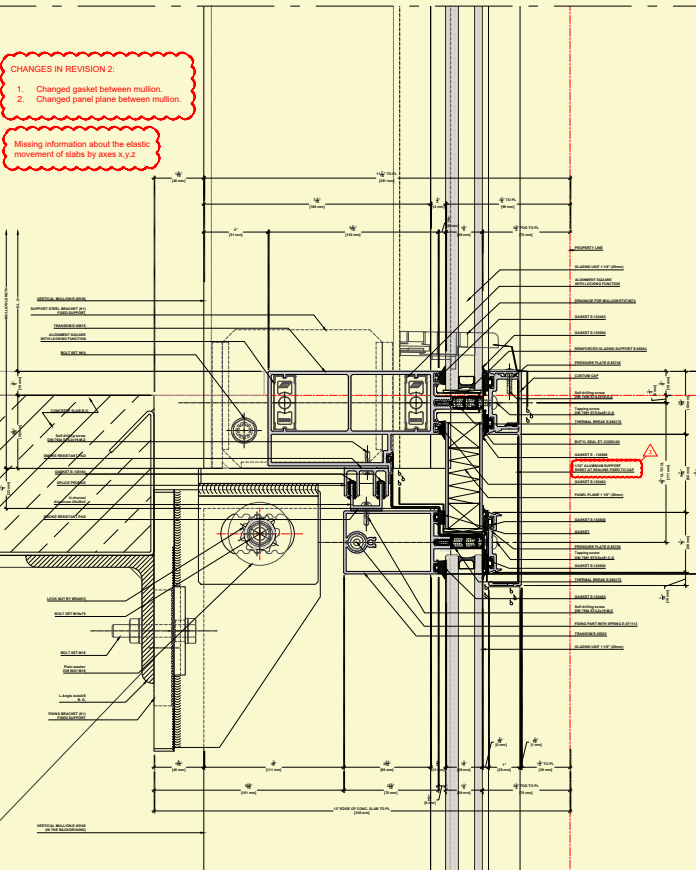
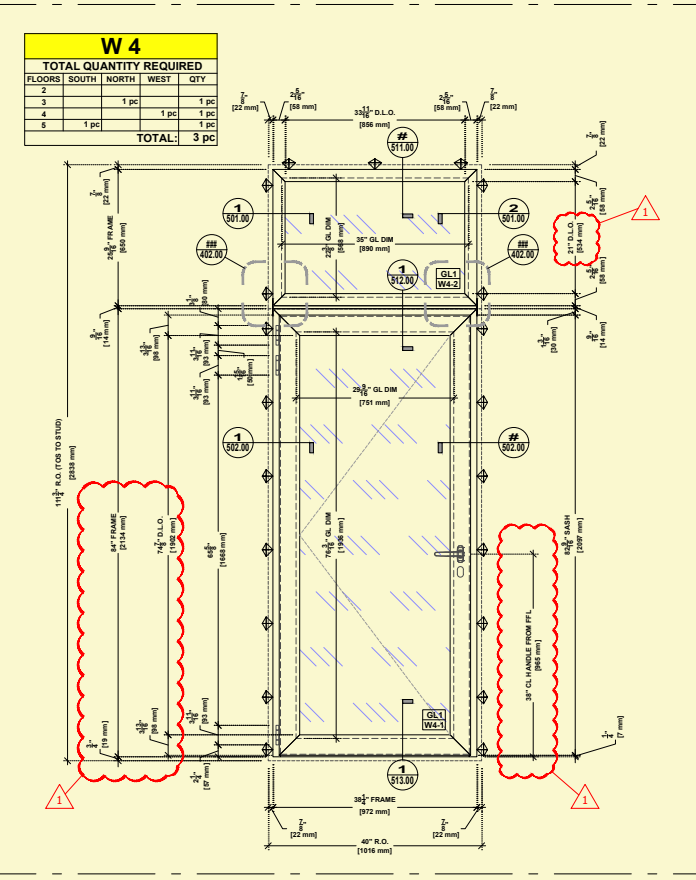
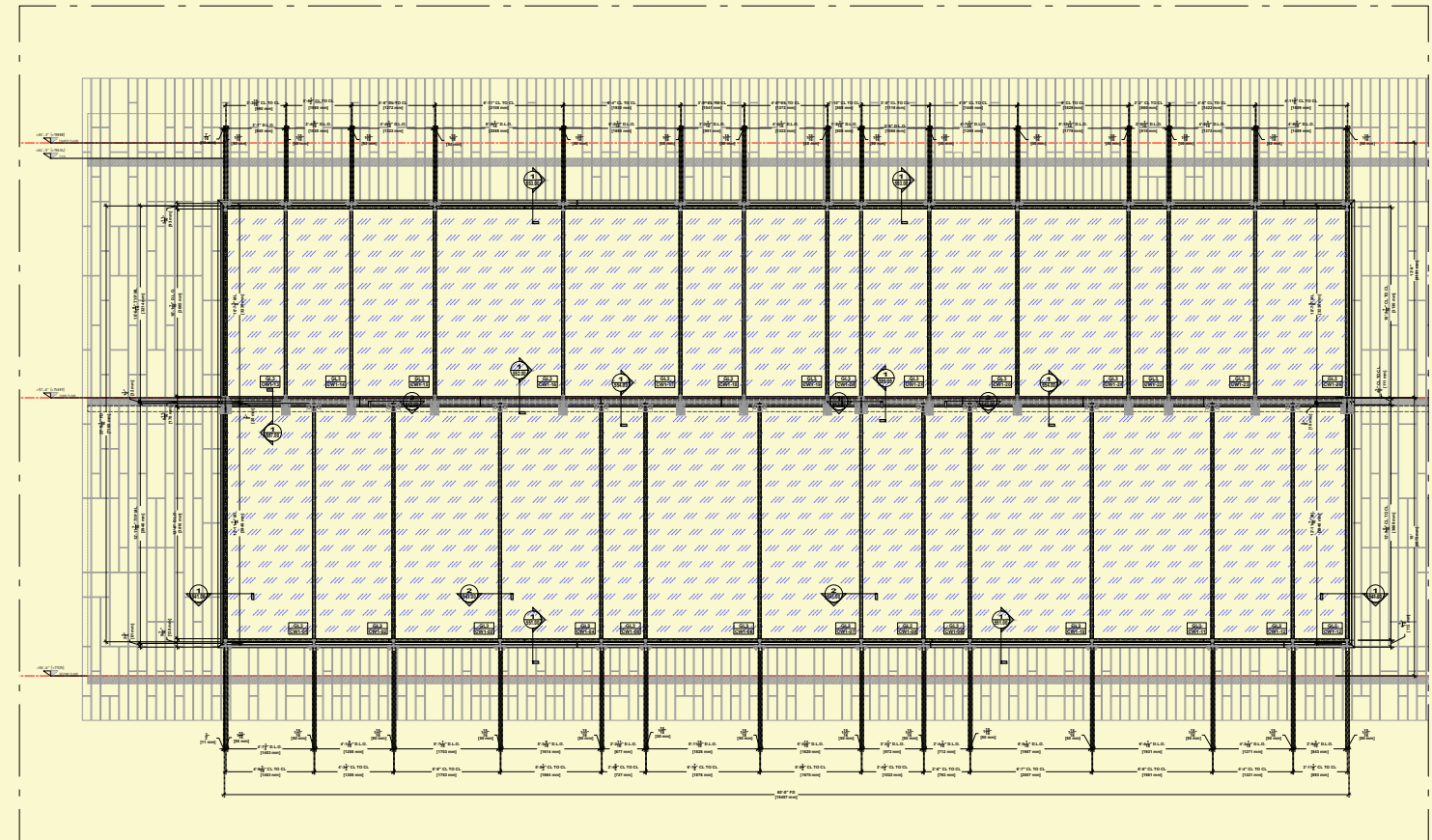
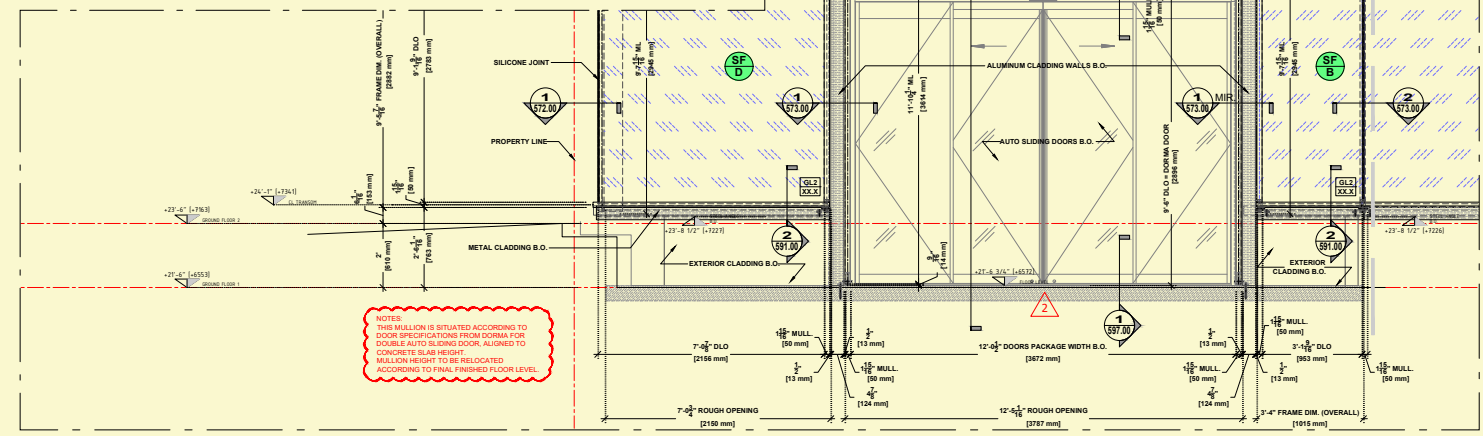


KINGS HIGHWAY

MURDOCK SOLON ARCHITECTS

Location: Brooklyn, NY, USA
Date of completion: 2018
Area: XX XXX m²
Shop Drawings: 63 pcs @ ARCH D
Cut Sheets: XX pcs
Contractor: ETEM



STUDIO CAD
Scope of Services:
Shop drawings for:
Curtain wall
Windows
Storefronts